



The Royal Scottish Pipe Band Association

Music Board – CERTIFICATION EDUCATION GUIDELINES

Piping SCQF Level 2 (PDQB LEVEL 1 – Chanter)

This guide is intended for both Students and Instructors. It must be read in conjunction with Piping SCQF Level 2 Syllabus to ensure all aspects are covered. Refer www.pdqb.org.

It is strongly recommended that all students sitting this level purchase RSPBA Structured Learning Book 1. It is therefore important that Instructors use Structured Learning Book 1 as their main source material. Bands or Branches may have a supply of this book.

Or go to www.rspba.org – select “Online Store” to purchase on-line.

Theory Aspects:

There are 3 Study Areas in Theory – you must pass each Area in the Examination. The Study Areas are:

Music Notation – most of the Example Questions shared below are in this category.

Writing Simple Music – the last sample question below covers all this activity.

Maintenance (Practice Chanter) – see the Maintenance section later in this document.



The Royal Scottish Pipe Band Association

Music Board – CERTIFICATION EDUCATION GUIDELINES

Piping SCQF Level 2 (PDQB LEVEL 1 – Chanter)

Here are examples of the activity that the Student may encounter in the examination:

- Be able to identify the name of each note and its duration. Here is an example of what the Student would be asked to cope with in an Examination i.e. to put the answers in the spaces provided.

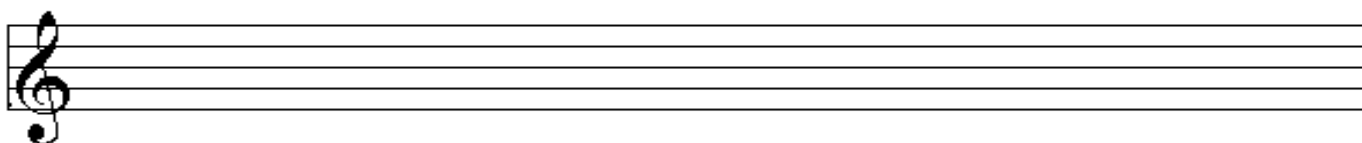


Note Low A

Duration Crotchet
(Quarter Note)

- A Typical question where the Student demonstrates their knowledge of Basic Music Writing from a description of a Note. e.g. On the blank stave below, write out the following notes:

- High G quaver (eighth note)
- D semi-breve (whole note)
- F demi-semi-quaver (thirty-second note)
- Low G crotchet (quarter note)
- B semi-quaver (sixteenth note)
- C Minim (half note)
- Low A quaver (eighth note)
- E crotchet (quarter note)



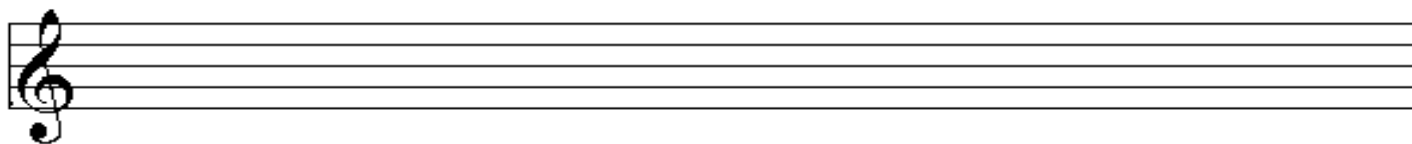


The Royal Scottish Pipe Band Association

Music Board – CERTIFICATION EDUCATION GUIDELINES

Piping SCQF Level 2 (PDQB LEVEL 1 – Chanter)

- Be able to explain how the duration of a note is affected when a dot is added.
- Be able to explain how the duration of a note is affected when a tail is added.
- Be able to draw a stave and at the start of the stave, draw a Treble Clef. Ensure this is neat and tidy and clearly shows the Clef starting on the "G" line, winding up to the "B" line, and back to the bottom line of the stave before winding its way up and down the Stave looking like the old letter "G". Neatness and clarity is very important. Be able to divide the stave into four equal bars using bar lines and in each bar, show a different example of notes, which have the value of two crotchets (quarter notes).
- Be able to explain how you would indicate the line of music above was repeated.
- Be able to copy a piece of music onto a blank stave provided. Neatness here is imperative.





The Royal Scottish Pipe Band Association

Music Board – CERTIFICATION EDUCATION GUIDELINES

Piping SCQF Level 2 (PDQB LEVEL 1 – Chanter)

Piping Maintenance Aspects – Covered in the Practical Sessions:

There is no expectation of the Student being asked to write on this activity at this stage. This is an oral examination. The Student will be asked by the Examiner to demonstrate by showing and talking the Examiner through each of the Maintenance Activities. Students need to be able to explain the following.

- **Dismantling the practice chanter** - Grip the chanter at the bowl with one hand and at the ferrule end of the top section (1 mark). Turn carefully and lift straight off (1 mark). Do not turn from the sole end (1 mark). When withdrawing, take due care not to damage the practice chanter reed (1 mark).
- **Cleaning and drying the practice chanter** - Shake off excess moisture (1 mark). Take out reed and leave to dry(1 mark). Brush out mouthpiece (1 mark).
- **Correct hemping of the practice Chanter** - Waxed hemp should be used to help keep airtight (1 mark) and water-tight (1 mark). Careful winding under tension (1 mark) to produce an even joint (1 mark). The fit must be tested periodically to ensure the best fit is gained (1 mark).

Practical Aspects – Known as the “Solo Performance”:

There are 3 Study Areas in the Solo Performance – you must pass each Area in the Examination. The Study Areas are:

Piping Exercises – We suggest you obtain the RSPBA Music for Exercises for this Level.

Monotone Exercises – Practice the Monotones below.

Bagpipe Music – the 2 Tunes you are going to submit and play on the Practice Chanter.



The Royal Scottish Pipe Band Association

Music Board – CERTIFICATION EDUCATION GUIDELINES

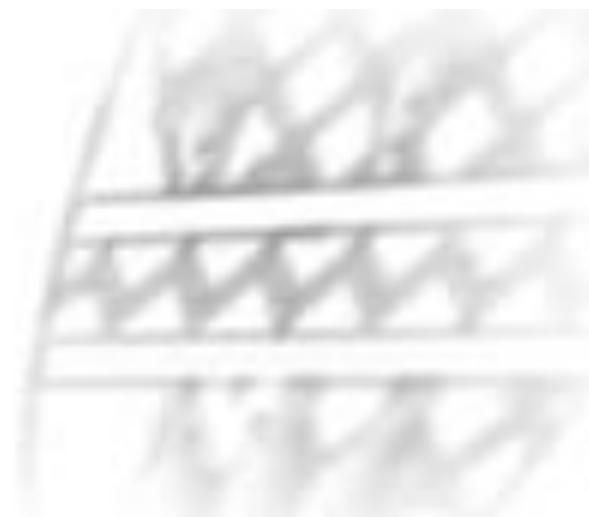
Piping SCQF Level 2 (PDQB LEVEL 1 – Chanter)

In respect of tune requirements, Students need to present the Music Scores to the Examiner. It is strongly recommended that both Students and Instructors are aware of the current requirements. Ensure you check the following:

- Refer to PDQB Syllabus for requirements – **it is essential to refer to the Web for the Exercises and Tune requirements**, just in case the PDQB has changed the requirements – www.pdqb.org
- For Standards Expectations, Refer to: www.college-of-piping.co.uk Click PDQB – review videos

Exercises:

- The scale.
- The scale to F with a G gracenote.
- The scale to C with a D gracenote.
- The scale to D with an E gracenote.
- G, D, E gracenote groupings.
- All strikes.
- Thumb or High A gracenote.
- The Throw on D from low A
- Doublings on High A, High G, F, E, D, C and B from Low A.





The Royal Scottish Pipe Band Association

Music Board – CERTIFICATION EDUCATION GUIDELINES

Piping SCQF Level 2 (PDQB LEVEL 1 – Chanter)

Other Practical Activity:

- **Basic monotone exercises in simple time.**
- **Two tunes played from memory.** The Music must be presented to the examiner and played in accordance with the score. The Music does not have to be written out by the Candidate. The tunes must incorporate some of the embellishments from the exercises listed in the exercises above. Select suitable tunes that you know well. Do not offer tunes which are not pipe tunes i.e. hymns, nursery rhymes or popular songs. Do not try to impress the examiner by playing difficult tunes. See recommendation for tunes below.

Recommended Tunes:

1. Scots Wha Ha'e
2. Use RSPBA MAP Marches – look for 2 quaver beat tunes – The Instructor / Tutor will guide you.

For RSPBA MAP Marches – www.rspbq.org (Committees / Music Board / MAP Tunes)

For Monotone Activity for Level 1 Piping see next page:



The Royal Scottish Pipe Band Association

Music Board – CERTIFICATION EDUCATION GUIDELINES

Piping SCQF Level 2 (PDQB LEVEL 1 – Chanter)

